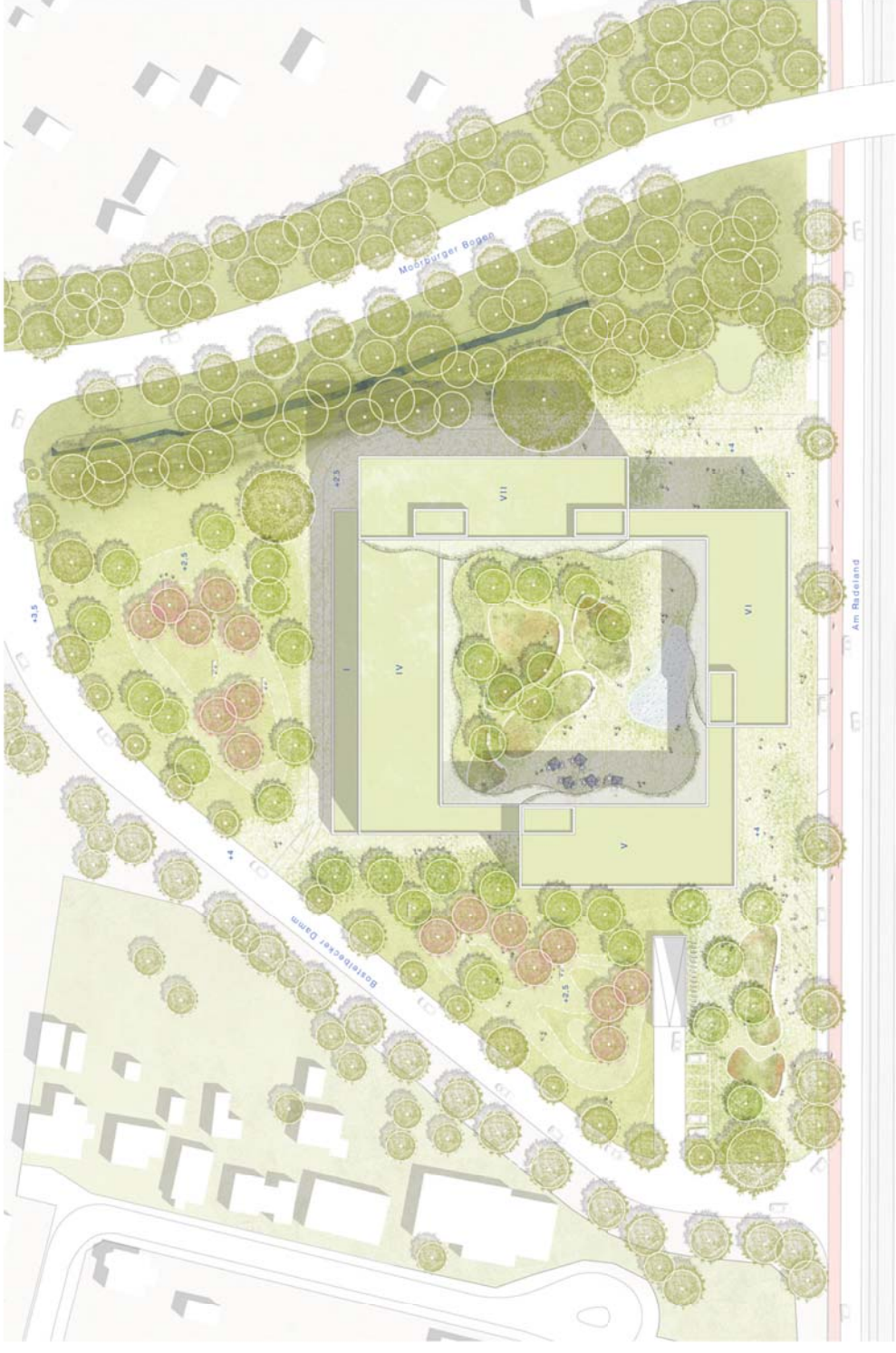
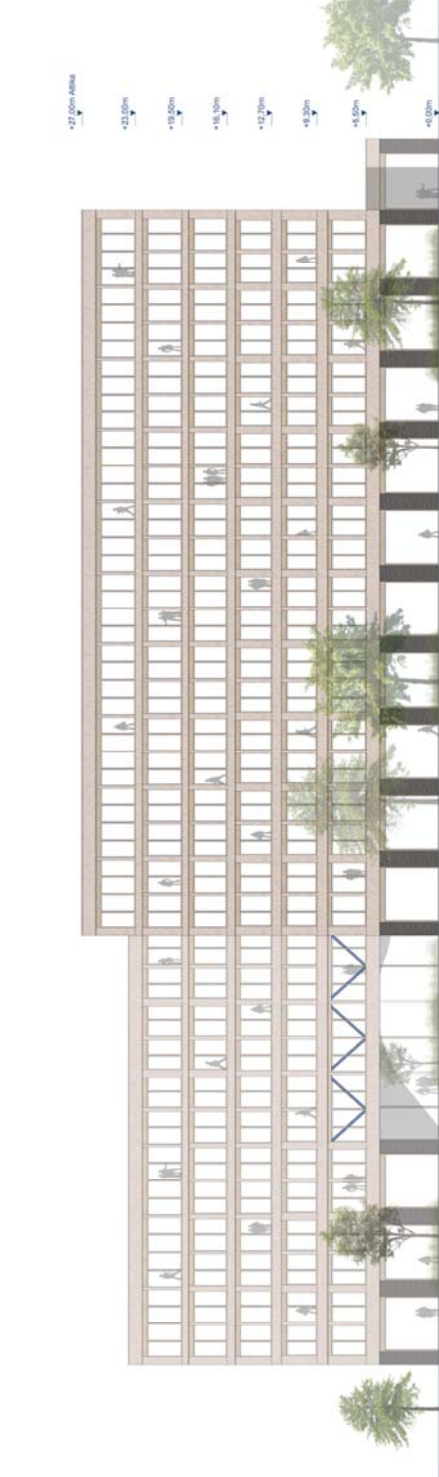




Der Komplex von der Stader Str.



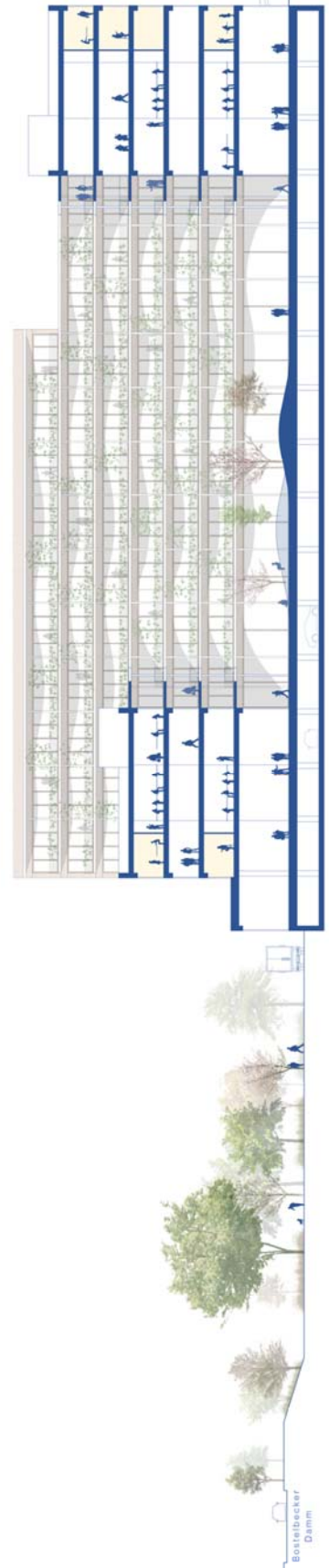
Lageplan
M 1:500



Ansicht Ost
M 1:200



Schattenanalyse



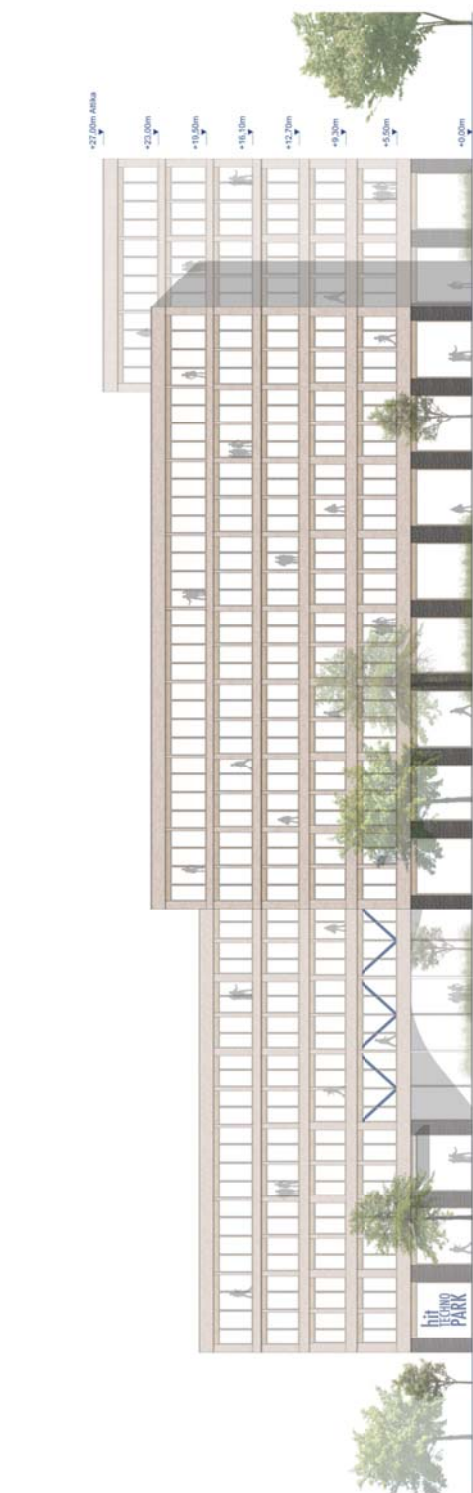
Schnitt NS
M 1:200



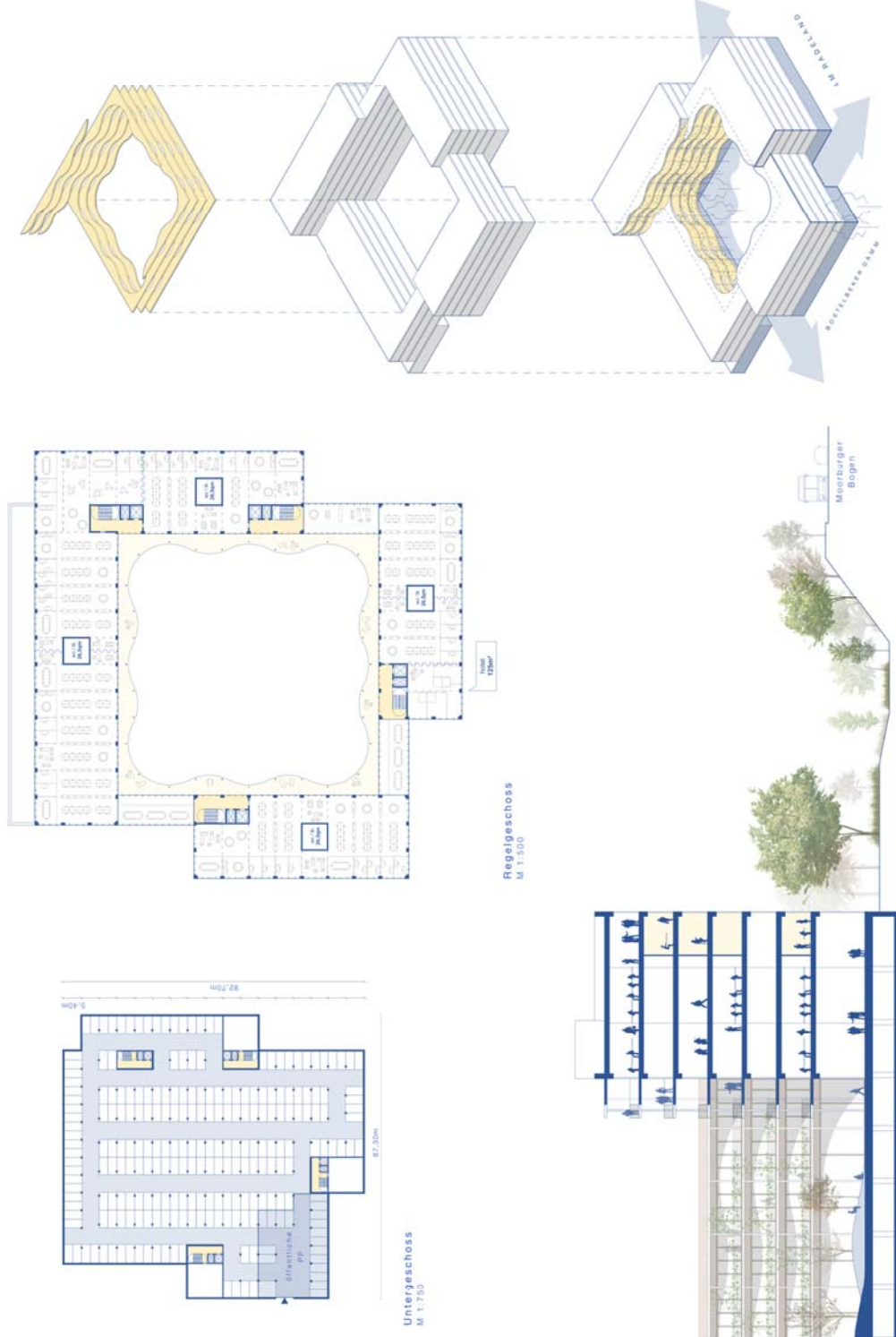
Hauptingang im Übergang zum bestehenden hit-Technopark



Erdgeschoss
M 1:500



Ansicht Süd
M 1:200



Regelgeschoss
M 1:500

Untergeschoss
M 1:750

Schnitt WO
M 1:250

Axe des Konzeptes
M 1:1000

ERWEITERUNG hitTECHNOPARK - HAMBURG 09.09.2019



<< hitTechnopark