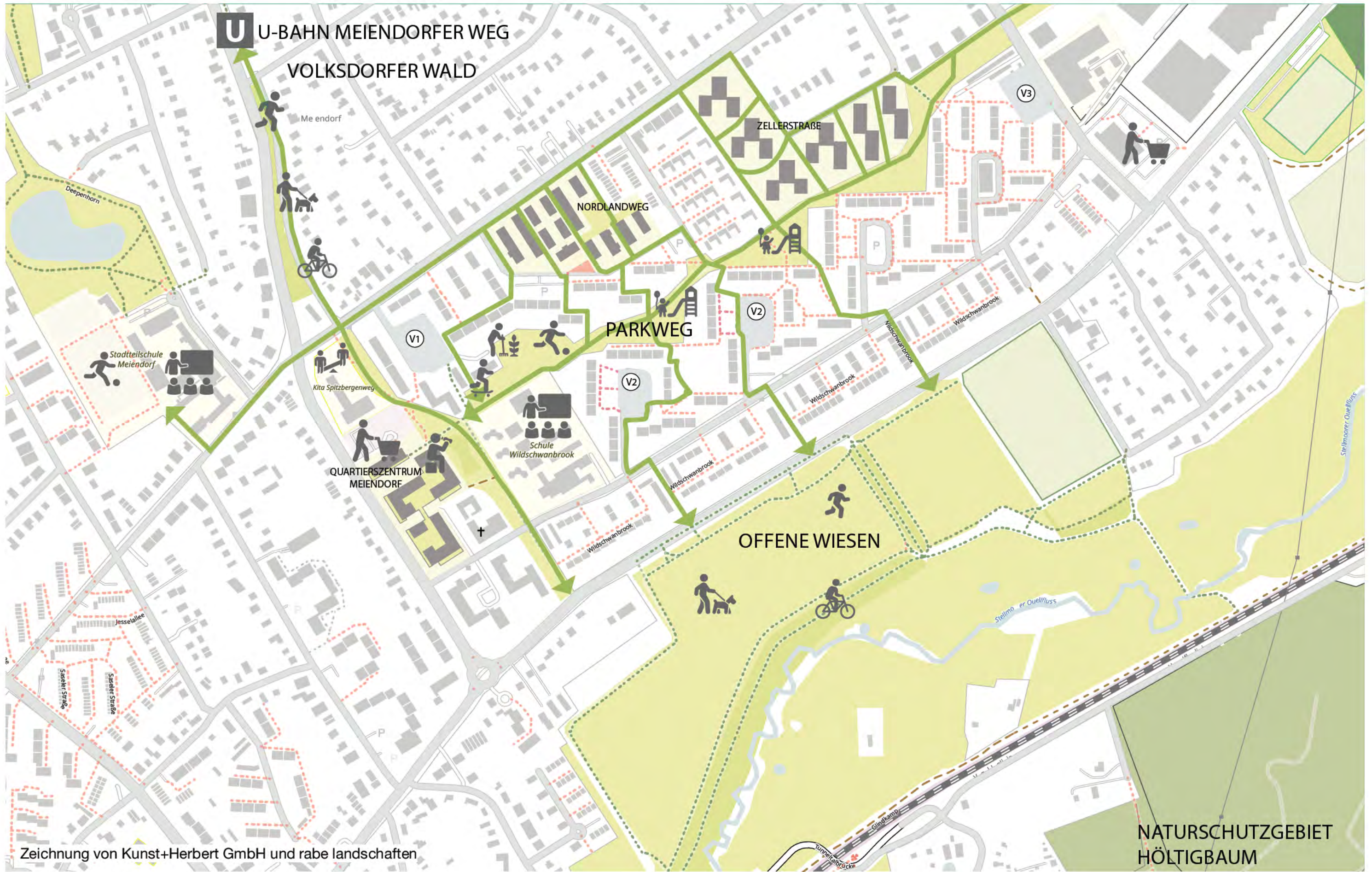


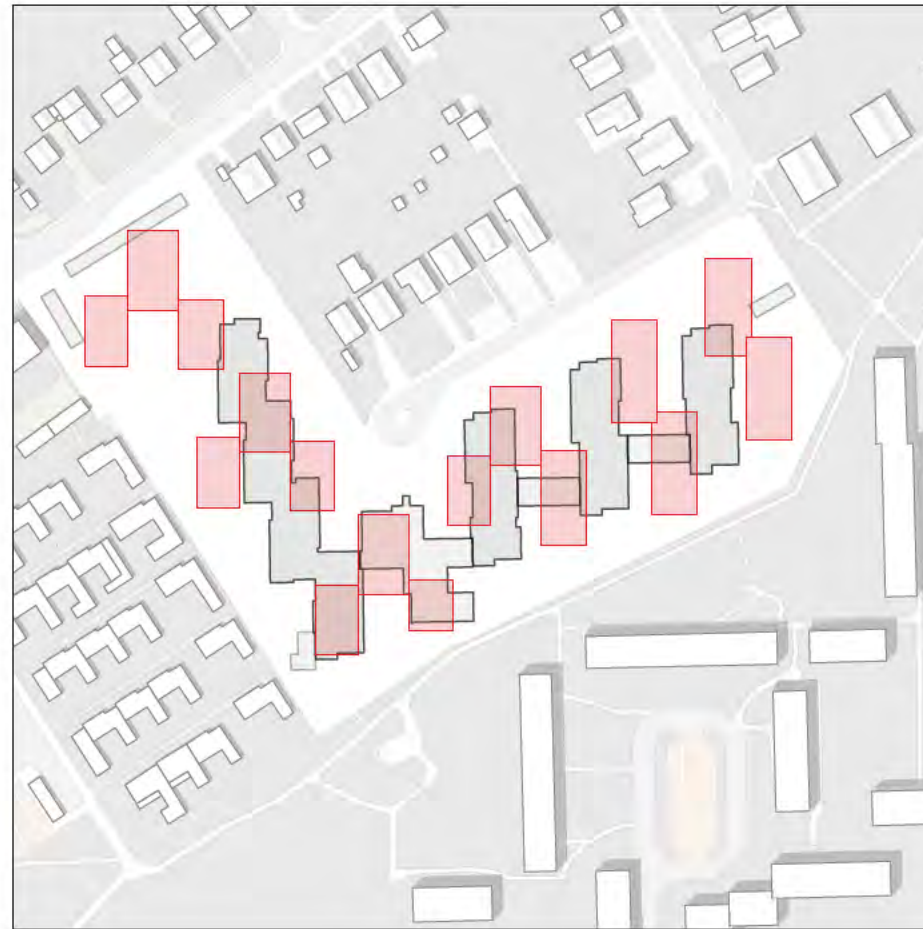
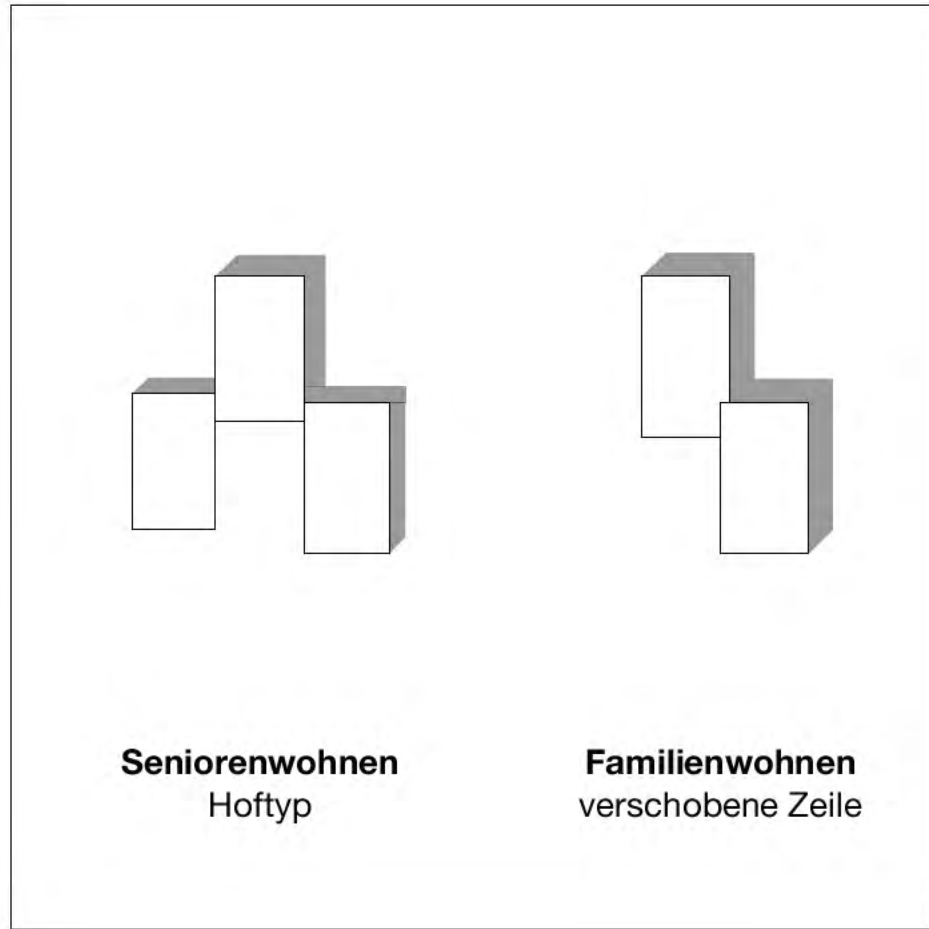


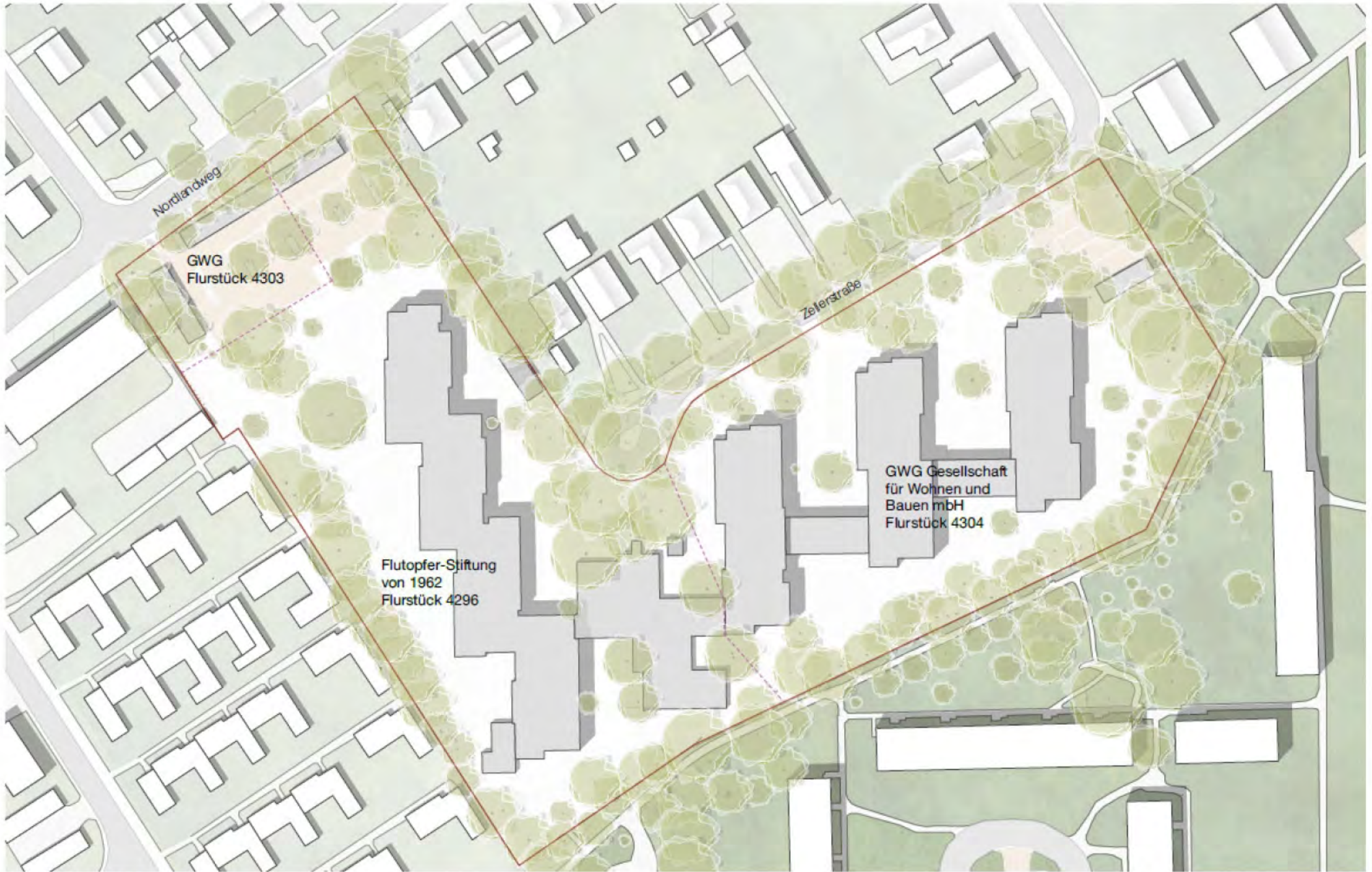
BEBAUUNGSSTUDIE ZELLERSTRASSE



Zeichnung von Kunst+Herbert GmbH und rabe landschaften

ZELLERSTRASSE





ZELLERSTRASSE





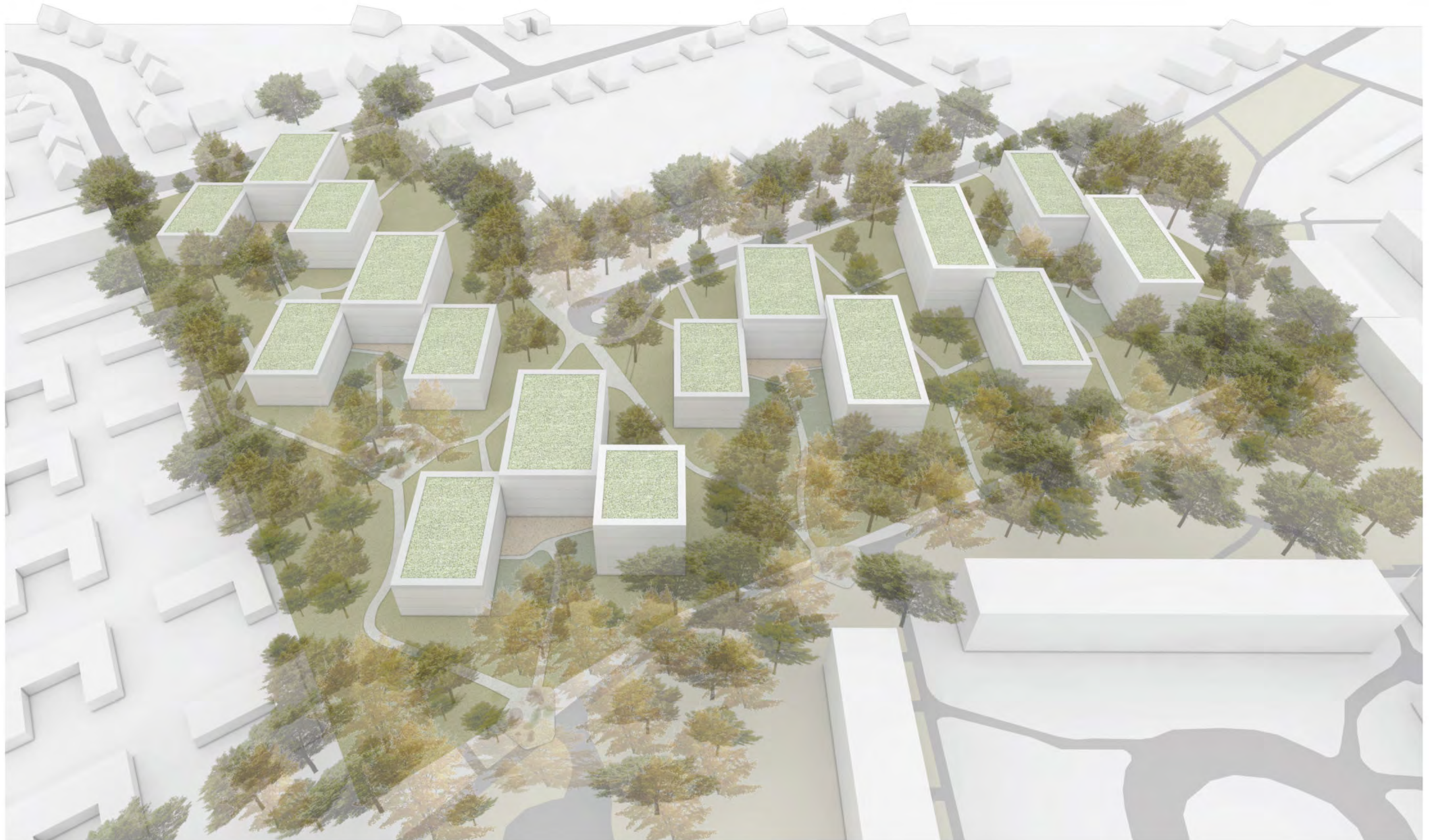
ZELLERSTRASSE





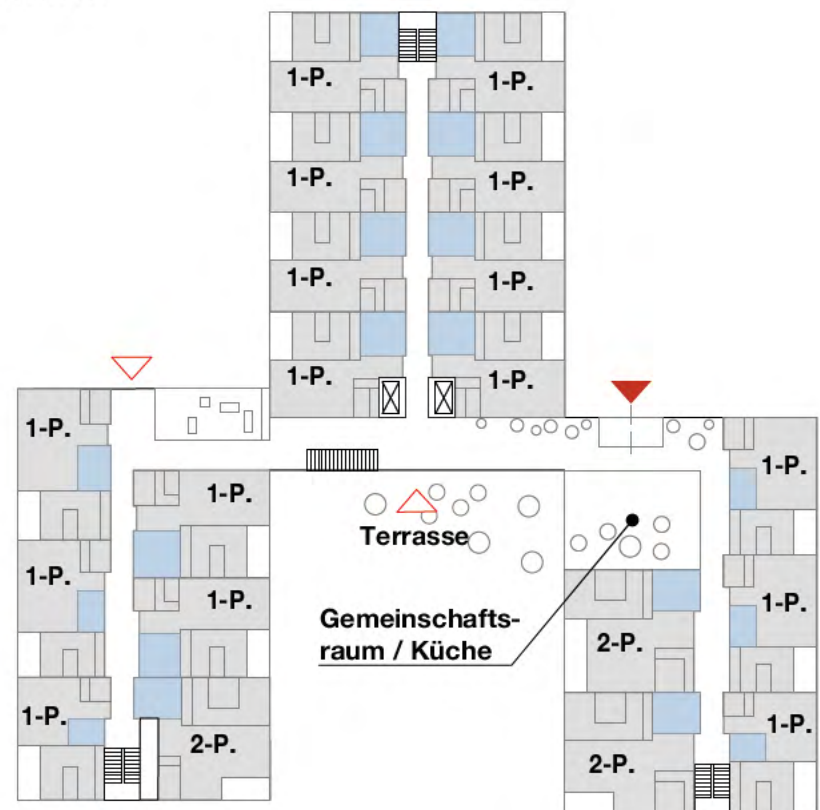
ZELLERSTRASSE





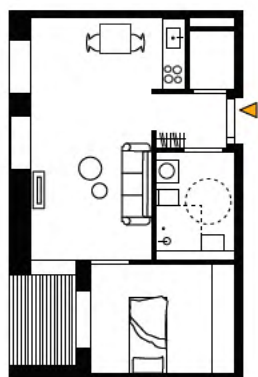
ZELLERSTRASSE

Erdgeschoss 1:500
Seniorenwohnen

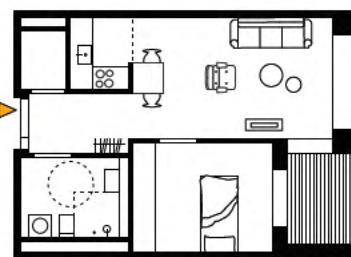


Module Wohneinheiten 1:200

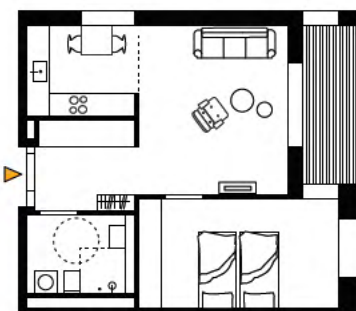
1-Pers. WE
44,7 m²
(43,7+1,0)



1-Pers. WE
43,9 m²
(42,9+1,0)



2-Pers. WE
54,0 m²
(52,5+1,5)



ZELLERSTRASSE